

Your Route to Success >>

reigate•college

sixth form education at its best

Parents Welcome to College

8 September 2025

Introduction

- **Louis Strover**
- Assistant Principal
Pastoral and
Progression
- **Mel Pearl**
- Assistant Principal
Safeguarding and
Interventions



Webinar structure

- To support your young person's college transition.
- To explain how the college operates and communicates with various parties.
- To signpost extensive support and information available.
- To answer as many questions as possible we will do these at the end.
- The slides will be shared tomorrow in the parent bulletin.

Journey to Reigate College

- **Open evening** - October 2024
- **Application Form** – Autumn 2024
- **Interview and course discussion** – 24/25
- **GCSE Exams** – summer 2025
- **Taster day** – getting to know college and subject tasters – June 2025. Parent webinar.
- **Subject Choices Day** – August 2025
- **Individual interview** – August 2025
- **Induction day** – Sept 2025 – Lesson for each subject, new tutor group, IT induction
- **All classes start** – 08 September



Communication parents/guardians

- Students more likely to be successful through **3 way communication**. Parent / guardian / college / student.
- There are 3 faculties - B, M, E,
- Each student is supported by a **personal tutor**.
- They will also be assigned to a **key pastoral member of staff**.
- If you want to contact a member of the pastoral team, please email studentservices@reigate.ac.uk

Pastoral support – settling in

- Tutorial – **each week** (compulsory)
 - Tutors **teach students** in year 1 (like a "form tutor").
 - Year 2 **pathway** dependant
 - Content - **key messages communication, health and well-being, careers and progression,**
 - Community days on hot topics - **county lines, consent, PREVENT**
 - Tutor oversees tutees' **pastoral care.**
- **Pastoral manager** (like head of year).
- Have concerns / discussion points **contact the tutor** in first instance.

Reporting on progress

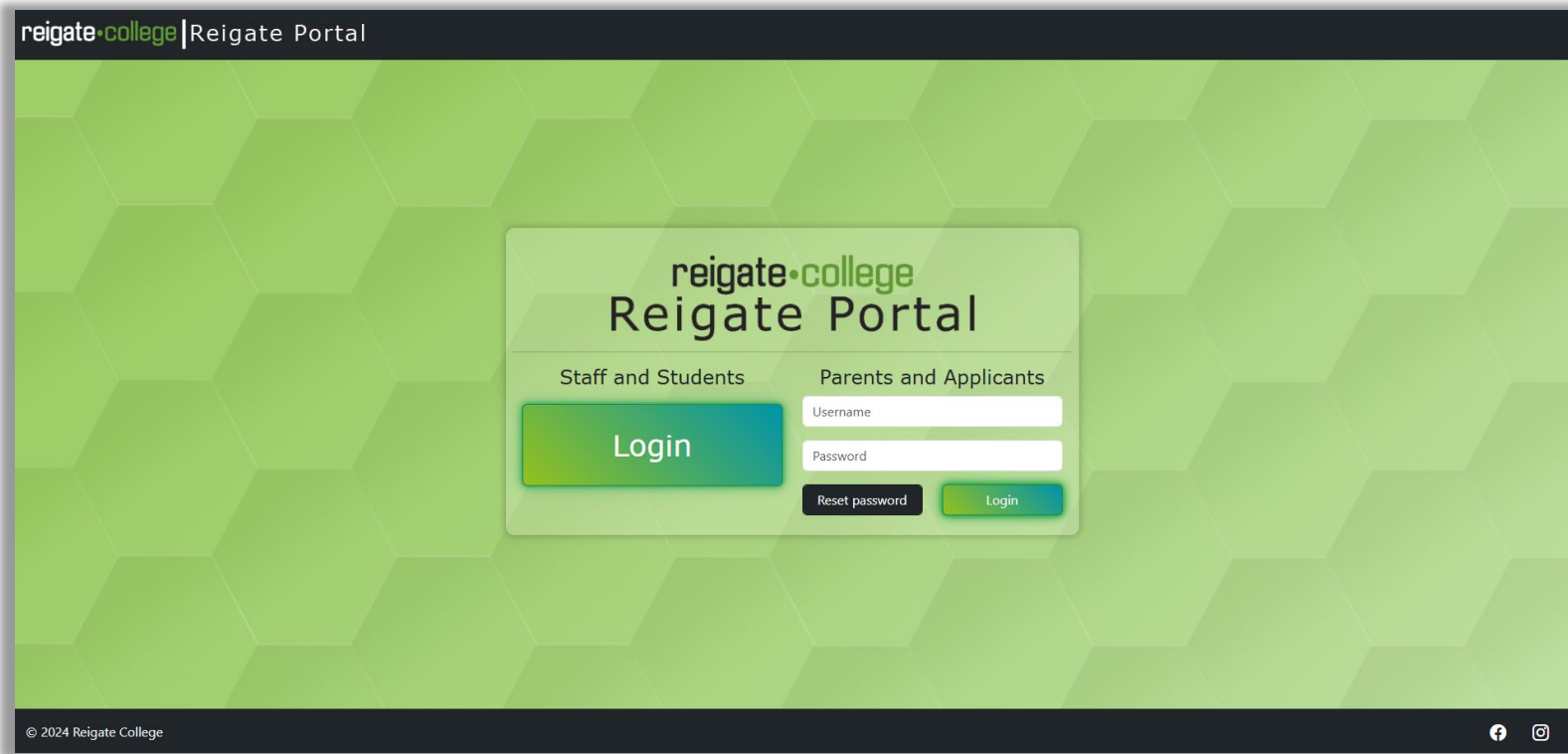
- Interim reports (IR) every six weeks approx.
 - **IR1** –20 October 2025
 - **IR2** - 08 December 2025
 - **Subject Review meeting** – via school cloud 15 and 16 December 2025
 - **IR3** - 09 February 2026
 - **IR4** - 23 March 2026
 - **IR5** – 11 June 2026 – progression exam outcome
- Sent home via e mail and available on the Portal

Interim Report Grade

- Each Interim Report is graded 4-1 for each subject
- 4 = Excellent / 3 = Good / 2 = Requires Improvement / 1 = Unacceptable
- Grading looks at the student's behaviour and attitude towards their learning across 3 areas:
 - Independence (outside the classroom)
 - Class ethic (inside the classroom)
 - Deadlines
- A Key Assessment grade is provided for an assessed piece of work:
 - **A level** – Graded A* to U
 - **BTEC/CTEC/AAQ** – Graded Distinction / Merit / Pass / NP (Near Pass on an exam unit) / R (Referral on an internal coursework unit)
 - **GCSE** – Graded 1-9 (1-5 for foundation level)

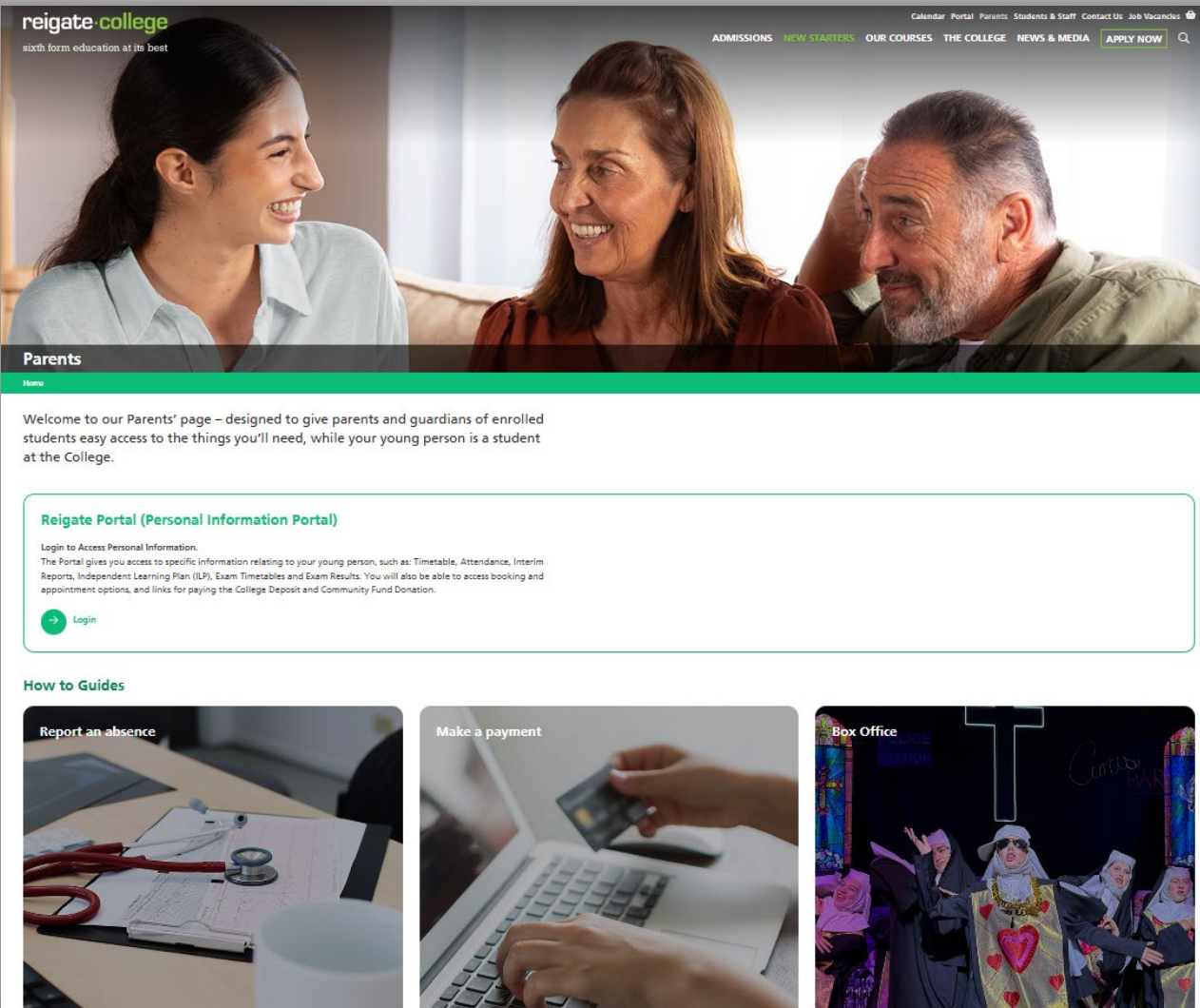
Accessing materials

- College portal is the gateway to the IT systems



The screenshot shows the Reigate Portal login interface. At the top left, it says "reigate•college | Reigate Portal". The main content area has a green hexagonal pattern background. In the center, there is a white box with the "reigate•college Reigate Portal" logo. Below the logo, there are two columns: "Staff and Students" with a large green "Login" button, and "Parents and Applicants" with input fields for "Username" and "Password", a "Reset password" button, and a smaller green "Login" button. At the bottom left, it says "© 2024 Reigate College". At the bottom right, there are social media icons for Facebook and Instagram.

Parents page – How to Guides and Quick links



reigate college
sixth form education at its best

Calendar Portal Parents Students & Staff Contact Us Job Vacancies

ADMISSIONS NEW STARTERS OUR COURSES THE COLLEGE NEWS & MEDIA APPLY NOW

Parents

Home

Welcome to our Parents' page – designed to give parents and guardians of enrolled students easy access to the things you'll need, while your young person is a student at the College.

Reigate Portal (Personal Information Portal)

Login to Access Personal Information.
The Portal gives you access to specific information relating to your young person, such as: Timetable, Attendance, Interim Reports, Independent Learning Plan (ILP), Exam Timetables and Exam Results. You will also be able to access booking and appointment options, and links for paying the College Deposit and Community Fund Donation.

Login

How to Guides

- Report an absence
- Make a payment
- Box Office

Canteen and paying for food

- Canteen payment is via **debit card (cashless)**
- Student can bring in packed lunch and food.
- Reigate centre very close and some go into town.
- Where possible please do not bring nut products into college.
- Pay for trips via evolve.



Subject Learning expectations

- Each course has **4 hours** per week class time in addition Plus class (one hour)
- Divided into **2 x 2 hour sessions**
- Subjects set **homework** each week and **structured learning**
- Each class has a **Microsoft teams page**.
 - Resources, homework, messages to whole group and individuals.
- **2-4-2+** model.
- The timetables **will change** throughout the year.
- Students are expected to be available between the hours of **9.00 and 4.15 - Mon - Fri**.



2-4-2+ example

Component	Explanation	Example
2	2 hours of Structured Learning	Weekly tasks are set on Teams including pre-work, research and revision
4	4 hours of in-class lessons	Weekly lessons
2	2 hours of homework	Weekly tasks that include assessments and consolidation work
+	Additional support	Plus classes, Direct study, Mentoring etc

My PD Dashboard



PERSONAL DEVELOPMENT

Careers 5

- Work Experience 1
- Encounters with Employers 2
- Encounters with Higher Education 2
- Careers Interview 0

Clubs and Activities 11 attended

Pathways 4 pathways

Community 6

- College Volunteering 0
- External Volunteering 0
- Charity 6

Tutorial Content 5 attended

Subject 3 items

- Trips 2
- Guest Speakers 0
- Subject Related Activity 1

Subject	Explanatory text to go here	
Date	Subject Type	Description
03/10/2023	Subject Related Activity	Senior Maths Challenge (Maths)
16/11/2023	College Trips	L-MFA & U-MFA Maths In Action 16 Nov 2023
01/06/2024	College Trips	Lynnes made up trip

Enrichment Extra Curricular

- Community days – **Thursday 18th September** in tutor groups. Compulsory all attend 9-4.15pm.
- **Team building, core activities**
- **Aspire** – Extended Project Qualification (EPQ)
- **Freshers Party** – e mail all students with det - date for the diary - 25 September 2025 at College.
- **Work experience** for all students – face to face



Course changes

- Opens Wednesday **10 September 6pm** closes **25 September 10am**. Through the student portal.
- **No changes** can be done after this date as the student will have missed too much.
- Student must **qualify for the course** they are changing to & **subject to spaces**.
- If successful start on the following Monday





Attendance

- **Attendance** can be monitored through the portal
- The College treats **attendance and punctuality** as you would be treated at work. 100% is expected.
- Reporting absence – **all absences must be "authorised by parent/guardian"**.
- Reported via the portal, email attendance@reigate.ac.uk by 8.30am
- Details have been sent on accessing the portal via e mail.
- **Holidays in term time** will not be authorised.
- **Every class is registered.** Register work live seen via portal.
- Warning (3 Stages)
- Continue to miss lessons and/or be late - may be **asked to pay for the exam fees** or **asked to leave College**
- Please see the attendance policy on the portal
- If a student is off college for a prolonged **period of time medical evidence** will be required and the Health and Readiness to Study policy may apply.

Important – Feeling Unwell

- If a student feels sick or unwell at College, they should go to Reception and the team will help them.
- Students should not leave site without signing out first.
- Please ensure we have two emergency contacts

Medical Information

- School **will not forward medical information**, so if a student has any medical conditions the College should be aware of, please let us know.
- A **medical health care plan** may be needed. For example, epilepsy, heart conditions, diabetes.
- If your child has a **medical condition** which makes them immunosuppressed, please let us know .
- studentservices@reigate.ac.uk

Finance and transport

- Bursary apply via the website – **Finance**
- You can apply for travel discounts if you live in Surrey.
- Free school meals at school
bursary@reigate.ac.uk
- **Financial difficulties** please talk to the pastoral team.



LINK

Aged 20 or under? Apply for a free 'LINK' card and get 50% off* all adult bus fares in Surrey.

Two LINK cards are shown. The first card is for Jonathan Steverson, ID 1234 5678 9123 4567, with an expiry date field. The second card is for Anna Smith, ID 34 5678 9123 4567, with a U16 category. Both cards feature the LINK logo, a bus icon, and the text 'LINKING YOU TO SURREY BUSES' and 'SURREY COUNTY COUNCIL'.

Apply online and find out more at surreycc.gov.uk/surreylink

* Please note the LINK card discount does not apply to: a child fare, season tickets or tickets purchased under the £2 bus fare cap scheme.

SURREY COUNTY COUNCIL

Train Travel Disruption

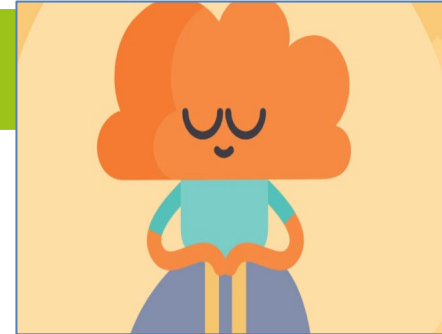
- Further to the e-mail you and your young person has received we wanted to remind you of the following;-
 - The train line between Guildford and Reigate will be closed for two weeks between Sunday 14 September and Saturday 27 September.
 - The changes will mean that between Sunday 14 September and Saturday 27 September there will be a bus replacement service in place of GWR services between Guildford and Redhill or Gatwick Airport.
 - Throughout this closure, Southern train services will still run between Redhill/Reigate and Gatwick Airport, as well as Thameslink and Gatwick Express service for the airport.
 - Online journey planners have been updated – please see GWR website for further details.
- The bus replacement timetables can be found in the e-mail.
- **Please note: for students who get this train in from Dorking Deepdene, the replacement bus will be stopping at Dorking Main station.**

Wellbeing at the College

The College at all times promotes positive wellbeing and resilience

The College has a lot to offer for wellbeing:

- Enrichment activities
- Wellbeing mentors - support social emotional wellbeing
- Wellbeing Appointments every week
- Student mentors that are upper sixth students to help lower sixth students
- Lunchtime clubs
- Free Gym Access
- Support Hub (P103)
- Counselling available at the college
- New this year – Mental Health support Team at the college – run by the NHS
- Director of Mental Health and Wellbeing and Senior tutor for Mental Health



My Support

Students can request support and book appointments through My Support page on the portal.



If you are struggling and feel in crisis, please come to reception where we can support you.

If you or someone you know is in crisis and needs immediate mental health support, you can call the free 24/7 crisis line at **0800 915 4644**. You can also call **999** or **112** in an emergency.

If you have a safeguarding concern, please speak to a member of staff or email: safeguarding@reigate.ac.uk.

Please note this is monitored Monday to Friday, 08:00 – 17:00.

If you are worried about your immediate safety or the safety of others outside of these hours, please **call 999**.

Support Booking Quick Links

Exam
Anxiety

Wellbeing
Appointments

Exam
Access

Careers
Appointments

My Current
Support



My Support
Bookings



My Support
Requests



Request Support

Welfare and safeguarding

- The College recognises the moral and statutory duty to **safeguard and support** the **welfare** of our students
- If you have any safeguarding or welfare concerns
- Safeguarding@reigate.ac.uk
- This is monitored **Monday to Friday 8.30 - 5.00 term time**. If you have serious safeguarding concerns outside these times, please call 999
- Please see the safeguarding policy

Supporting Vulnerable students

- Does your child have a **caring responsibility** for a family member?
- **Care Experienced Child**
- Has your child received support from other external agencies such as, **adolescence service, children's services, Catch 22, Young carers, mental health services , CAMHS.**
- Please let us know.
- Safeguarding@reigate.ac.uk

Reigate College Values - 3Rs

- **Rights, Respect, Responsibility**
- **Right to high quality education**
- Highly skilled staff
- Not to disrupt the learning of others.
- Excellent facilities
- **Right to be treated fairly:**
- Equality and diversity. Free from harassment and bullying
- **Respect for all:**
- All members college community. Celebrate diversity,
- The local community. Travelling to and from college, in town.
- **Responsibility -**
- To keep the college a safe environment. - Lanyards, intruders, report unsafe practice.
- To yourself, and others. Foster resilience
- Learning and lessons, - only submit work that is their own, properly reference materials.
- Use of IT, Social Media and AI.
- Student Code of conduct - **Gross misconduct**

Expectations

- External work hours no more than **8 –10 hours a week**
- Clothing. **Not revealing, not offensive.** Students are at college to study, adult environment.
- Travelling to college – where possible use **public transport.**
- Parent drop off only.
- Parking is very limited on site. Once passed test students may apply for a permit. £50.
- Parking outside of college - please park **considerately**

Expectations in lesson

- Attend lessons **on time**
- No mobile phones in lessons
- No **food or drink** other than water
- **Complete** all homework and structured learning
- Have the **correct equipment**
- Do not disrupt the **learning** of others
- Three strikes



Future events

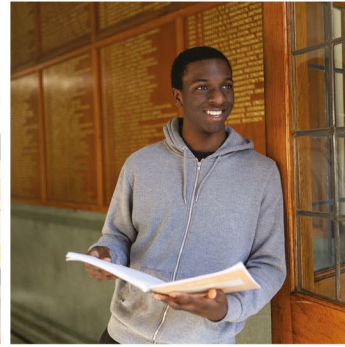
- Parent bulletin
- Updates on the portal – check weekly

Future webinars:

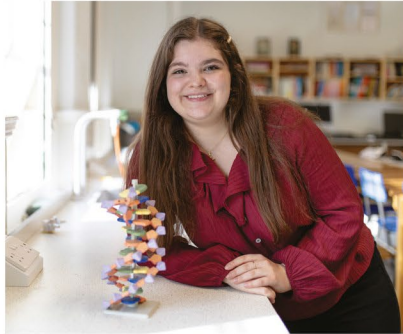
- Welcome to Careers **Thursday 9 October 2025 6pm-7pm.**
- **Thank you for engaging.**

Useful contacts

- Most information can be found on the parent portal or website
- enquiries@reigate.ac.uk
- studentservices@reigate.ac.uk
- safeguarding@reigate.ac.uk
- attendance@reigate.ac.uk
- bursary@reigate.ac.uk
- careers@reigate.ac.uk



reigate•college



high quality education
in a supportive community